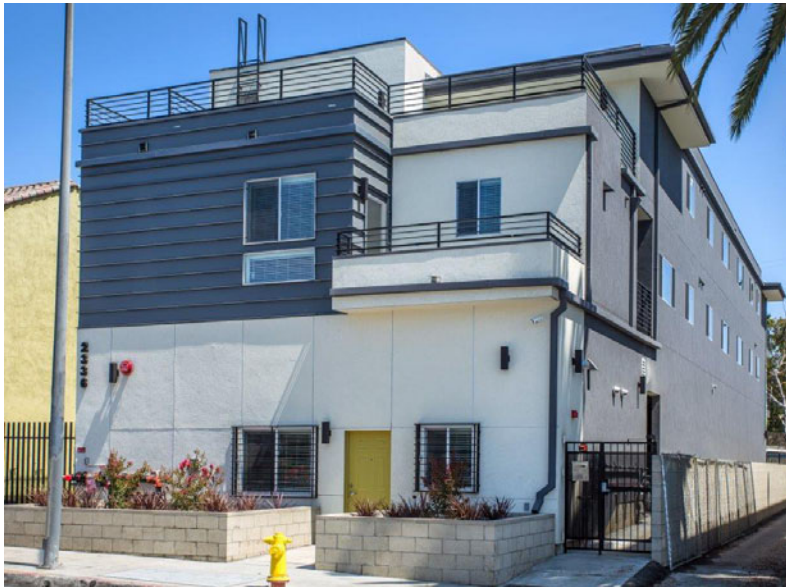


FOR IMMEDIATE RELEASE

**JDC CONSTRUCTION + DEVELOPMENT GROUP COMPLETES NEW
MULTIFAMILY PROJECT IN HISTORIC WEST ADAMS DISTRICT**



LOS ANGELES, CA –
September 9, 2014 – [JDC Construction + Development Group \(JDC\)](#), long recognized for its expertise in the renovation and revitalization of multifamily rental properties, has completed a ground-up apartment project in the historic West Adams district of Los Angeles. Named **Crenshaw Apartments**, the two-story, 10-unit contemporary

project is located at 2336 South Crenshaw Boulevard in the heart of an area currently undergoing a renaissance.

According to **John Donaldson**, president of JDC, property developer **JV Crenshaw, LLC** purchased the Crenshaw site with existing plans. “However, working with the developer, we made significant revisions to these to ensure that the apartment homes met the needs of the area’s rental market. In doing so, we eliminated the community laundry room, installing washers and dryers in each apartment, as well as individual water meters for each unit. Finally, charging capabilities for electric cars were added in some of the project’s parking stalls.”

Donaldson went on to point out that the neighborhood surrounding Crenshaw Apartments is the focus of a major urban revival led by the revitalization of the neighboring Crenshaw Plaza shopping center and the construction of the new Crenshaw light rail line. “Much of the residential area in West Adams consists of large, once elegant Craftsman style single-family homes, many in need of restoration, and older apartment buildings badly needing updating. This project is one of very few new construction projects in the area.”

21704 Devonshire Street, Suite 102, Chatsworth, California 91311
Office: 818-772-7464 / Fax: 818-772-4945

ABOUT JDC

Founded by John Donaldson in 1992, JDC specializes in the reconstruction and renovation of multifamily projects throughout California and the Pacific Northwest, with a focus on Southern California. The company has overseen the construction or reconstruction of over 10,000 units with a total budget exceeding \$100 million. JDC is also expanding into the development of ground-up projects, including new single-family and multifamily properties. The company is headquartered in Chatsworth, CA.

###

MEDIA CONTACTS: Clive Hoffman, Clive Hoffman Associates, Inc.
(310) 205-9930 (O); (310) 909-9320 (C);
cliveh@clivehoffmanassociates.com

Jill Hoffman, Clive Hoffman Associates, Inc.
(310) 205-9930 (O); (323) 719-7111 (C);
jillh@clivehoffmanassociates.com

John Donaldson, JDC
(818) 772-7464 (O); (818) 307-1448 (C);
John@JDCgrouppla.com